

natural indulgence



Cold, wet and windy weather can wreak havoc on your skin, so why not treat yourself to a deliciously natural facial. Rachel Vickary road tests the next big thing in skincare.

I'M not usually a facials kinda gal, since I'm always convinced that any beauty therapist worth her weight in exfoliator will know at a glance that my usual skin care regime is, shall we say, a little slapdash.

OK, so I don't always take my make-up off properly (panda eyes anyone?), I tend to choose skin care products based on whether I can throw them into the trolley with the groceries and I don't always slip, slop, slap before heading out into the sun.

So a trip to Just Lush Makeup and Beauty for a MiSMo facial had the potential to be a nerve-racking experience. Luckily, owner and beauty therapist Sharron Lucas was quick to reassure me that the experience would be both painless and enjoyable and she was right.

The MiSMo skin care range is new to Ipswich and as I relaxed on a beauty bed and enjoyed some serious pampering (wearing a very fetching paper shower cap), Sharron explained the many benefits of MiSMo.

"It's a very simple range to use," Sharron says. "You can use the cleanser and exfoliator in the shower ... and then follow up with the moisturisers afterwards."

"For a lot of people, a really complicated skin care routine puts them off, so it ends up being a waste of money because the products are such a hassle to use."

A combination of hands-on, holistic facial techniques

with simple, soothing products makes the MiSMo facial the ultimate in beauty bliss.

Two applications of the cleanser followed by the gentle exfoliator leaves skin feeling ultra clean, while the MiSMo Cell Soother helps even out skin tone and repair skin that's been damaged by breakouts.

Sharron then applies the anti-ageing rejuvenating gel to help plump and hydrate the skin and finishes with a cooling and soothing nourishing moisturiser.


"A lot of people think that anti-ageing products are only for much older skins, but it helps to prevent and delay the signs of ageing," she explains.

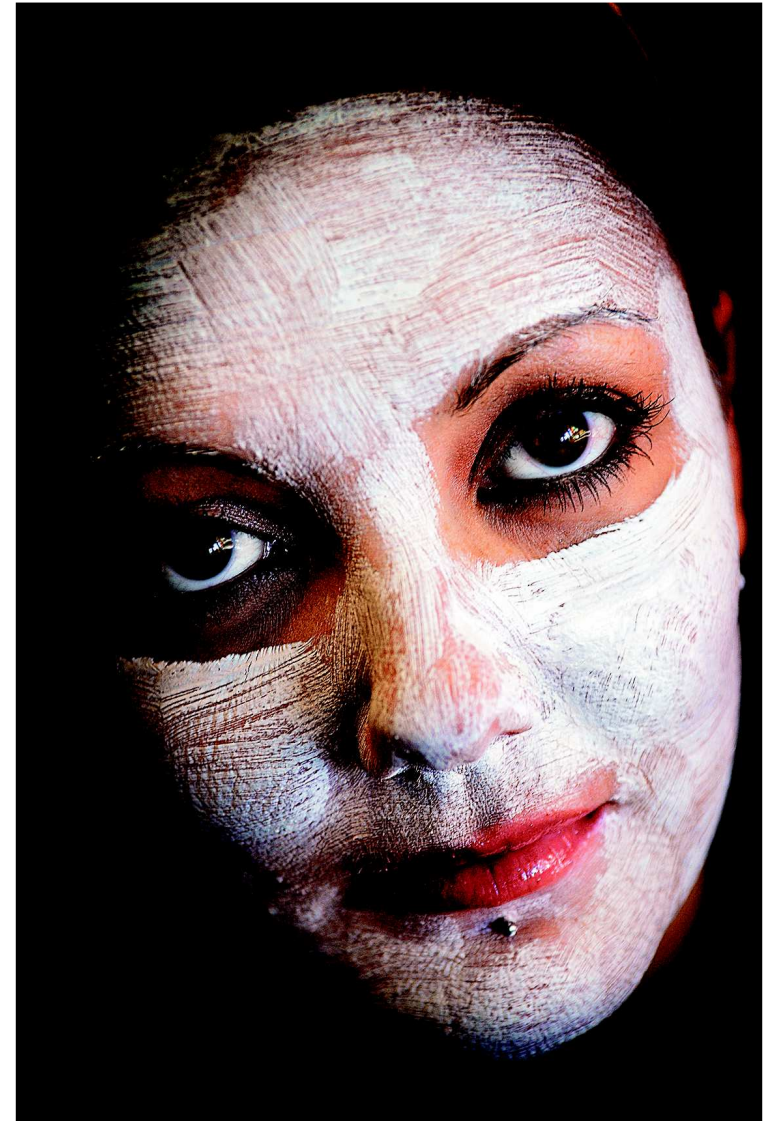
Featuring MSM (or methyl sulfonyl methane) – a source of organic sulphur which exists naturally in the skin cells – and soothing aloe vera as two of the main ingredients, MiSMo products absorb into the skin to replace lost nutrients, leaving your skin feeling clean and clear without having to use harsh chemicals.

The entire facial treatment only takes about 20 minutes although the effects last for hours.

A whole 12 hours after the treatment, my skin still felt moisturised, smooth and firm. Just Lush Makeup and Beauty stocks the entire MiSMo range, as well as a special travel sized pack for customers to use at home, which I just had to try.

Divine!

Just Lush Makeup and Beauty is at Shop 7, 87 Brisbane St, Ipswich: 3281 9678. 



bathrooms • kitchens • laundry



Ipswich Bathroom Concepts

Shed 2/280 Brisbane Street, West Ipswich

3812 3844

wilson@gil.com.au

www.ipswichbathrooms.com.au